



Welcome to Leicester

Sir Peter Soulsby
City Mayor



Leicester
City Council

26 February 2026





KOBEN

KOBEN

NOW OPEN
NEAPOLITAN
PIZZA





Leicester Mercury

WAVE GOODBYE TO HOSPITAL, SCHOOL FIELDS, GOLF COURSES, ALLOTMENTS...

COUNCIL IDENTIFIES AREAS FOR HOUSING AS IT TRIES TO BALANCE LOSING LAND AND MEETING TARGETS

A SHORTLIST of areas in the city identified as potential sites for housing includes school playing fields, parks, play areas, golf courses, former allotments and part of the General Hospital site, writes Dan Martin.

Officials have earmarked 83 sites for housing developments, as well as the building of schools, industrial schemes and offices which they say will underpin their efforts to find the land needed to meet government targets.

City mayor Sir Peter Saultby has admitted finding sites for the new draft local plan - a strategy for shaping how the city grows until 2030 - will prove controversial.

One critic, opposition councillor Nigel Porter, has called the current draft "a planned destruction" of the city's green spaces. But Sir Peter has insisted that the council's earmarking carefully considered sites for development will serve to protect those open spaces that remain.


FULL STORY PAGE 4 & 5



The information in this document has been used to support the preparation of the Local Plan. If you need assistance reading this document, or require it in an alternative format, please contact us: www.leicester.gov.uk/citymayor/leicester.gov.uk or on 0116 454 8055.

Leicester Local Plan Issues and Options

Document for consultation
September 2014




City Mayor

consultations.leicester.gov.uk
Help shape the future of Leicester

It's your city

Emerging options reference document

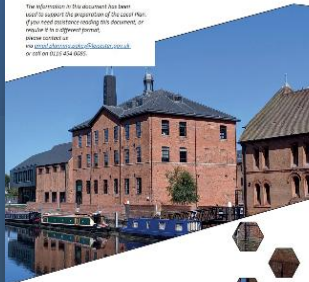


The information in this document has been used to support the preparation of the Local Plan. If you need assistance reading this document, or require it in an alternative format, please contact us: www.leicester.gov.uk/citymayor/leicester.gov.uk or on 0116 454 8055.

City of Leicester Local Plan


2020 to 2036

The information in this document has been used to support the preparation of the Local Plan. If you need assistance reading this document, or require it in an alternative format, please contact us: www.leicester.gov.uk/citymayor/leicester.gov.uk or on 0116 454 8055.



Draft Plan for Consultation
March 2020


The information in this document has been used to support the preparation of the Local Plan. If you need assistance reading this document, or require it in an alternative format, please contact us: www.leicester.gov.uk/citymayor/leicester.gov.uk or on 0116 454 8055.



Leicester Local Plan

2020 to 2036

Leicester Local Plan Issues and Options



Findings of the public consultation
March 2016

Prepared by:
Planning, Transportation and Economic Development

Leicester City Council

consultations.leicester.gov.uk
Help shape the future of Leicester

It's your city

The information in this document has been used to support the preparation of the Local Plan. If you need assistance reading this document, or require it in an alternative format, please contact us: www.leicester.gov.uk/citymayor/leicester.gov.uk or on 0116 454 8055.

Development management reference



The information in this document has been used to support the preparation of the Local Plan. If you need assistance reading this document, or require it in an alternative format, please contact us: www.leicester.gov.uk/citymayor/leicester.gov.uk or on 0116 454 8055.

consultations.leicester.gov.uk
Help shape the future of Leicester

It's your city

Potential development sites



The information in this document has been used to support the preparation of the Local Plan. If you need assistance reading this document, or require it in an alternative format, please contact us: www.leicester.gov.uk/citymayor/leicester.gov.uk or on 0116 454 8055.

July 2017

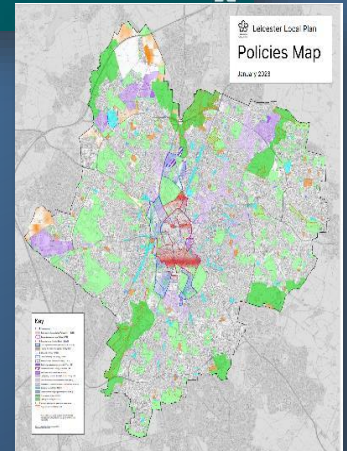


Diagram 2 with modifications.

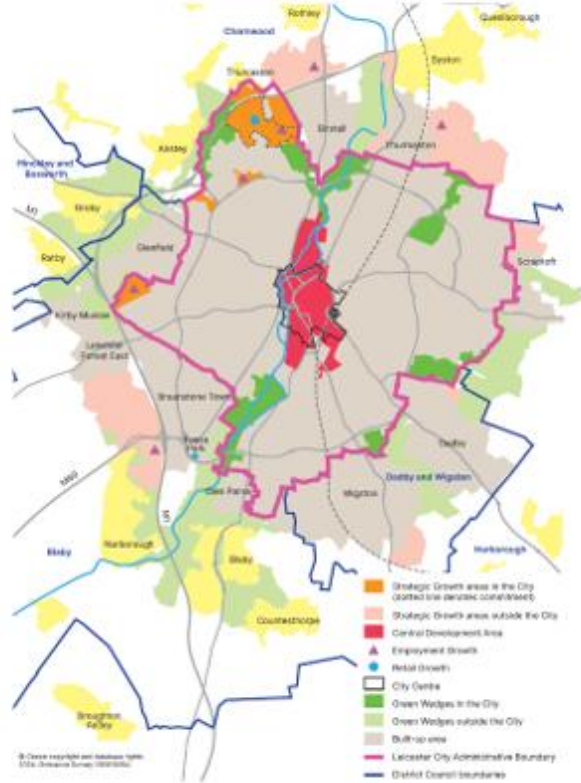


Figure 45:



copyright and database rights 2023 Ordnance Survey AC0000816831









Leicester's Grand Hotel restoration hailed a 'triumph' by Historic England

The Grade II-listed Grand Hotel, in Leicester, and its neighbouring shopfront from Historic England

NEWS By [Ciaran Fagan](#)

12:59, 20 DEC 2024

▶ Enter your **postcode** for local news and info

Enter your postcode

Go

In   Your











